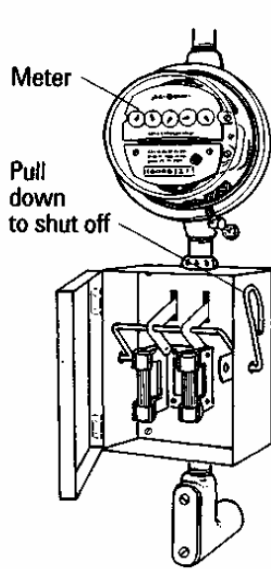
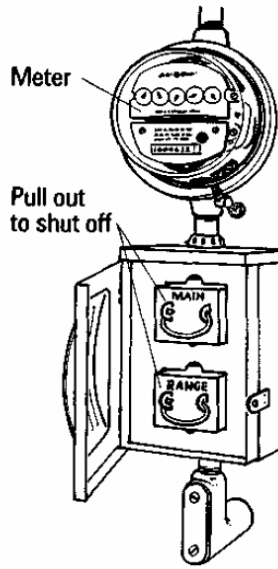


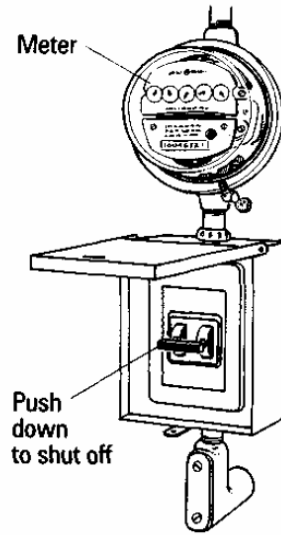
ELECTRIC SHUT-OFFS



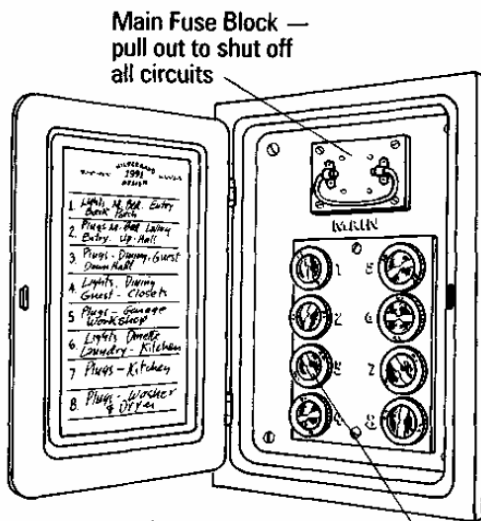
FUSE TYPE



FUSE DRAWER TYPE

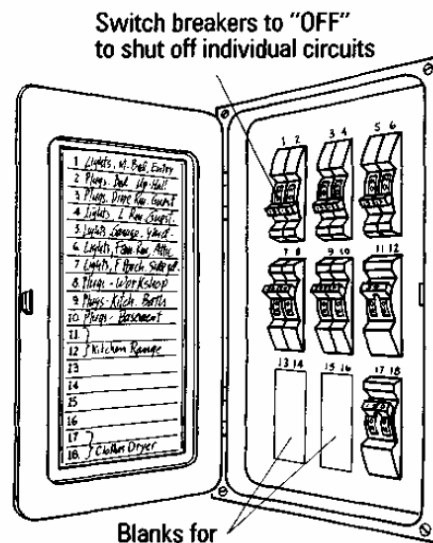


BREAKER TYPE



Turn fuse counter-clockwise to shut off individual circuits

FUSE BOX



Switch breakers to "OFF" to shut off individual circuits

Blanks for additional circuits

BREAKER PANEL

Remember: When turning off the electricity after a disaster, turn off the individual circuits first and then the main circuit. When you want to restore power, turn on the Main circuit first and then the individual circuits.

